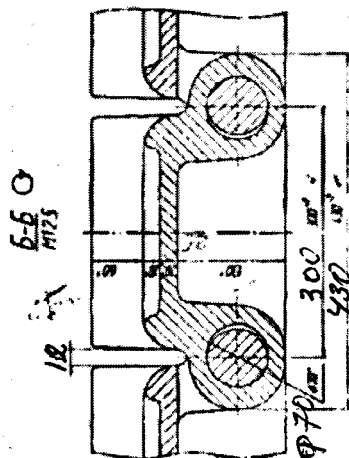
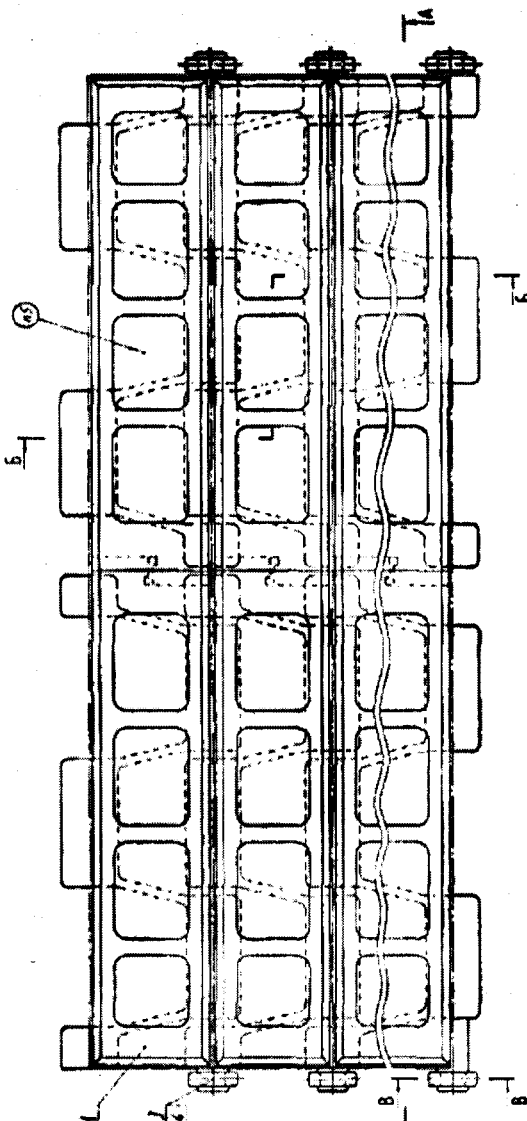
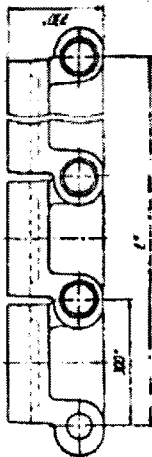
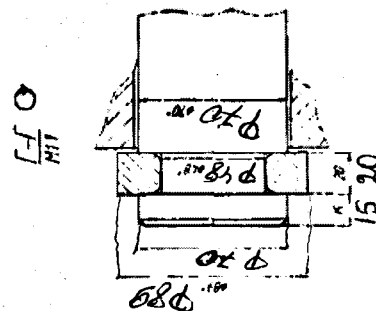
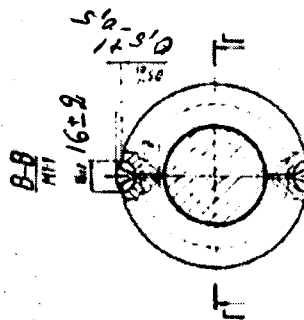


4-4



1. Elapsed years from inception approximately equal 1/2 PERIOD 14-25
2. First name of company owner known (including pseudonym)
3. Purpose of the operation
4. Frequency and 11-177 opns. per mo.
5. Approximate 1/2 PERIOD 14-25
6. Approximate 1/2 PERIOD 14-25
7. Approximate 1/2 PERIOD 14-25
8. Approximate 1/2 PERIOD 14-25
9. Approximate 1/2 PERIOD 14-25
10. Approximate 1/2 PERIOD 14-25
11. Approximate 1/2 PERIOD 14-25
12. Approximate 1/2 PERIOD 14-25
13. Approximate 1/2 PERIOD 14-25
14. Approximate 1/2 PERIOD 14-25
15. Approximate 1/2 PERIOD 14-25
16. Approximate 1/2 PERIOD 14-25
17. Approximate 1/2 PERIOD 14-25
18. Approximate 1/2 PERIOD 14-25
19. Approximate 1/2 PERIOD 14-25
20. Approximate 1/2 PERIOD 14-25
21. Approximate 1/2 PERIOD 14-25
22. Approximate 1/2 PERIOD 14-25
23. Approximate 1/2 PERIOD 14-25
24. Approximate 1/2 PERIOD 14-25
25. Approximate 1/2 PERIOD 14-25
26. Approximate 1/2 PERIOD 14-25
27. Approximate 1/2 PERIOD 14-25
28. Approximate 1/2 PERIOD 14-25
29. Approximate 1/2 PERIOD 14-25
30. Approximate 1/2 PERIOD 14-25
31. Approximate 1/2 PERIOD 14-25
32. Approximate 1/2 PERIOD 14-25
33. Approximate 1/2 PERIOD 14-25
34. Approximate 1/2 PERIOD 14-25
35. Approximate 1/2 PERIOD 14-25
36. Approximate 1/2 PERIOD 14-25
37. Approximate 1/2 PERIOD 14-25
38. Approximate 1/2 PERIOD 14-25
39. Approximate 1/2 PERIOD 14-25
40. Approximate 1/2 PERIOD 14-25
41. Approximate 1/2 PERIOD 14-25
42. Approximate 1/2 PERIOD 14-25
43. Approximate 1/2 PERIOD 14-25
44. Approximate 1/2 PERIOD 14-25
45. Approximate 1/2 PERIOD 14-25
46. Approximate 1/2 PERIOD 14-25
47. Approximate 1/2 PERIOD 14-25
48. Approximate 1/2 PERIOD 14-25
49. Approximate 1/2 PERIOD 14-25
50. Approximate 1/2 PERIOD 14-25
51. Approximate 1/2 PERIOD 14-25
52. Approximate 1/2 PERIOD 14-25
53. Approximate 1/2 PERIOD 14-25
54. Approximate 1/2 PERIOD 14-25
55. Approximate 1/2 PERIOD 14-25
56. Approximate 1/2 PERIOD 14-25
57. Approximate 1/2 PERIOD 14-25
58. Approximate 1/2 PERIOD 14-25
59. Approximate 1/2 PERIOD 14-25
60. Approximate 1/2 PERIOD 14-25
61. Approximate 1/2 PERIOD 14-25
62. Approximate 1/2 PERIOD 14-25
63. Approximate 1/2 PERIOD 14-25
64. Approximate 1/2 PERIOD 14-25
65. Approximate 1/2 PERIOD 14-25
66. Approximate 1/2 PERIOD 14-25
67. Approximate 1/2 PERIOD 14-25
68. Approximate 1/2 PERIOD 14-25
69. Approximate 1/2 PERIOD 14-25
70. Approximate 1/2 PERIOD 14-25
71. Approximate 1/2 PERIOD 14-25
72. Approximate 1/2 PERIOD 14-25
73. Approximate 1/2 PERIOD 14-25
74. Approximate 1/2 PERIOD 14-25
75. Approximate 1/2 PERIOD 14-25
76. Approximate 1/2 PERIOD 14-25
77. Approximate 1/2 PERIOD 14-25
78. Approximate 1/2 PERIOD 14-25
79. Approximate 1/2 PERIOD 14-25
80. Approximate 1/2 PERIOD 14-25
81. Approximate 1/2 PERIOD 14-25
82. Approximate 1/2 PERIOD 14-25
83. Approximate 1/2 PERIOD 14-25
84. Approximate 1/2 PERIOD 14-25
85. Approximate 1/2 PERIOD 14-25
86. Approximate 1/2 PERIOD 14-25
87. Approximate 1/2 PERIOD 14-25
88. Approximate 1/2 PERIOD 14-25
89. Approximate 1/2 PERIOD 14-25
90. Approximate 1/2 PERIOD 14-25
91. Approximate 1/2 PERIOD 14-25
92. Approximate 1/2 PERIOD 14-25
93. Approximate 1/2 PERIOD 14-25
94. Approximate 1/2 PERIOD 14-25
95. Approximate 1/2 PERIOD 14-25
96. Approximate 1/2 PERIOD 14-25
97. Approximate 1/2 PERIOD 14-25
98. Approximate 1/2 PERIOD 14-25
99. Approximate 1/2 PERIOD 14-25
100. Approximate 1/2 PERIOD 14-25

[illegible]

1-386-2816

нам Ват-Т: 1-316628-02

Гр. мек. оф. С. Я. де. Бониги.

Объем		Счетная таблица	Наименование	№	Примечание	Материал	Масса	
Деталь	Измерения						1 шт	всего
			1-316 628 - 02					
			<u>Детали</u>					
1	2-221 007		Полупластина 1-24	216		Сталь 35ХМФЛ	195	42120
2	3-470412 - 02		Ось	108		Сталь 45Х	76	8208
3	4-845 162		Полукольцо	20		Сталь 35	0,34	6,8
4	4-912 516		Кольцо	206		Сталь 20	0,46	94,8
			<u>Материалы</u>					
			Наплавленный металл	13 кг				1,3

1-316628

гл. мех. оф:  Н. Б. Березин.